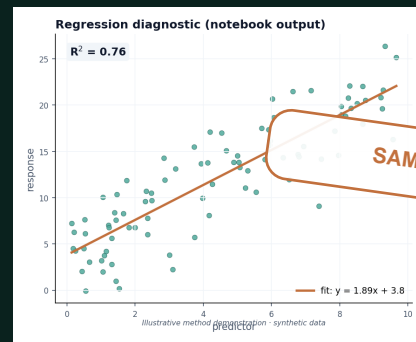


Spatial Model Defense Review Memo

Sample technical review for a map-backed claim



Model check

SERVICE

Sample package

Consultants

AUDIENCE

Ideal buyer

Defensibility

OUTCOME

Decision support

This preview shows the style, structure, and level of explanation a client can expect: a concise decision memo, clear maps, evidence tables, assumptions, limits, and next steps. All data shown here is synthetic or illustrative.

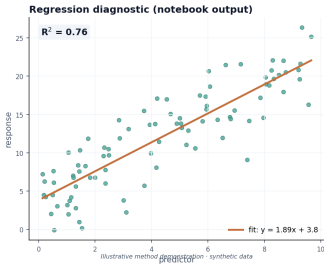
What the buyer can use it for

- Understand whether a spatial model or map-backed claim is ready to share.
- Find method, workflow, and interpretation risks before a client sees the report.
- Get a prioritized action plan rather than a vague technical critique.

Executive readout

The conclusion is promising but needs stronger spatial diagnostics.

This sample reviews a hypothetical hotspot and spatial regression workflow. The memo separates presentational issues from methodological risks and gives a prioritized fix list.



Partial
DEFENSIBLE
 Needs fixes

10 pts
REVIEW
 Checklist

- Data documentation** 58/100
- Spatial diagnostics** 44/100
- Map clarity** 72/100
- Reproducibility** 61/100

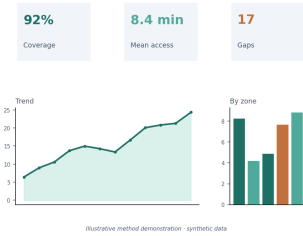
Area	Finding	Risk	Fix
Model	Residual autocorrelation unclear	High	Run Moran test and report
Map	Legend hides uncertainty	Medium	Add class notes
Workflow	Inputs not versioned	Medium	Add source manifest

Workflow evidence

A strong deliverable shows how the conclusion was made.

The review checks whether another analyst could reproduce the result, whether the map supports the claim, and whether model assumptions are visible enough for a client report.

Operations dashboard



6
PRIORITY FIXES
Before delivery

Memo
REVIEW LEVEL
Scoped audit

For consultants
Reduce review risk before handing a technical report to a client.

For researchers
Strengthen methods and reproducibility before submission.

For teams
Turn ad hoc notebooks and maps into a repeatable workflow.

For decision-makers
Know which conclusions are strong and which are preliminary.

Recommendation

Recommended next steps

The sample memo ends with a prioritized action plan so the client knows what to fix first.

Fix before publication

- Add spatial diagnostics and explicitly report whether model residuals remain spatially structured.
- Document source data, transformations, coordinate systems, and exclusion rules.

Improve interpretation

- Separate model association from causal language.
- Add uncertainty notes to the map legend and executive summary.

Limitations

- This sample is a focused review, not a full reanalysis. A paid review can include rerunning models if source data and code are provided.