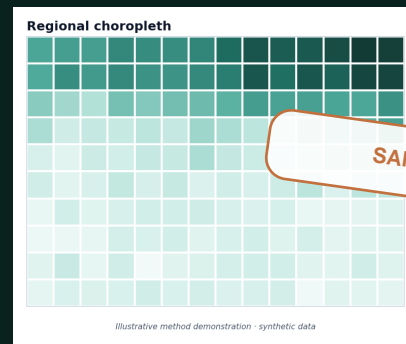


Lead Risk and Environmental Justice Grant Map



Sample evidence memo for planning and grant support

Grant map

SERVICE

Sample package

EJ teams

AUDIENCE

Ideal buyer

Evidence memo

OUTCOME

Decision support

This preview shows the style, structure, and level of explanation a client can expect: a concise decision memo, clear maps, evidence tables, assumptions, limits, and next steps. All data shown here is synthetic or illustrative.

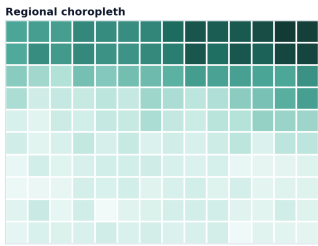
What the buyer can use it for

- Show where environmental burden and vulnerable populations overlap.
- Support grant narratives, community memos, or early technical scoping.
- Separate map evidence from claims that the data cannot support.

Executive readout

Priority blocks cluster around older infrastructure.

This sample combines lead-risk proxies, housing age, demographic vulnerability, and infrastructure context into a clear map memo. The goal is to identify where a team should collect better field data first.



Illustrative method demonstration - synthetic data

14
PRIORITY
 Sample block groups

Screen
CONFIDENCE
 Needs field check
 78/100

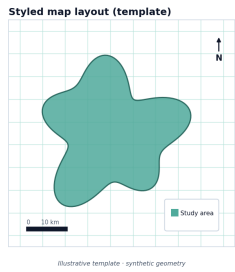


Area	Risk	Why it matters	Next action
North grid	High	Older housing plus gaps	Verify service-line records
Central band	Med-high	Vulnerability overlap	Prioritize outreach
South edge	Medium	Partial data only	Fill missing records

Evidence interpretation

The value is in the overlay, not the single layer.

A single map can overstate certainty. The sample memo explains where multiple indicators point in the same direction and where the evidence is weak.



5
DATA LAYERS
Sample inputs

Memo
OUTPUT
Grant-ready

For grant teams
Use the map and source notes to support a clear need statement.

For consultants
Turn scattered public indicators into a concise technical appendix.

For communities
Explain risk patterns without overstating individual household exposure.

For utilities
Prioritize record cleanup and field verification by area.

Recommendation

Recommended next steps

The sample closes with operational actions, source notes, and caveats so the map supports decisions without pretending to be ground truth.

Prioritize verification

- Begin with the high-priority blocks where housing age, infrastructure age, and vulnerability overlap.
- Use the map to target field verification and service-line record cleanup, not to label individual homes.

Use in communication

- Include the source table and limitations in any grant appendix or public memo.
- Pair the map with plain-language interpretation for nontechnical readers.

Limitations

- This is a screening product. It should be followed by local records, field verification, and subject-matter review before operational decisions.